



Westleton Common Annual Report 2020



photo by Juliet Bullimore

WESTLETON COMMON ANNUAL REPORT 2020

Contents

Review of the Year

Westleton Common Advisory Group Members

Westleton Common; Compartment Plan

Programme 2020

New Year's Day Bonfire and Fireworks

Working Parties

Nature Walks and other Observations

Fungi

Insects

Moths

Safety Audit

APPENDIX - 2020 Records:

Silver Studded Blue Butterflies

Fungi

Moths

Reptiles

Insects

Birds

Annual Report 2020 – Review of the Year

2020 was a year primarily for reflection and regrouping (or one in which, less charitable people may argue, nothing much happened). The Covid-19 pandemic and the inevitable restrictions meant that very little work could actually be done.

The national lockdowns and tiered restrictions throughout the year meant that the Common Advisory Group was unable to meet. Venues for meetings were “off limits”. At various times the village hall had to close and meetings in private homes were felt to be inappropriate. Some members of the advisory group fell into at-risk age groups or were otherwise vulnerable and some lived with other vulnerable people. When meetings were arranged they had to be cancelled. Holding meetings was just not possible.

The one major event that could take place was the firework display held to welcome 2020 on 1st January. This did, actually, prove to be the highlight of an otherwise disappointing year, a year that started off with a bang and when downhill ever since. Ah well! We are very grateful to Nick Shearme and his colleagues on the firework committee for giving us something to remember.

There were several changes in the membership of the Advisory Group. Roy Jones resigned as Chairman but continues as a member. Roy Swindell resigned his membership. At the request of Westleton Parish Council Nick Shearme replaced Roy Jones as Chairman. The Parish Council also appointed 3 additional parish councillors to the group; Amanda Freeman, Chris Freeman and Andrew Turner. Nick Shearme has written to both Roy Jones and Roy Swindell to thank them for their contributions.

There are now 9 members of the group, 5 parish councillors and 4 representing the wider community. Westleton PC and, indeed, the Advisory Group would like to maintain a balance of parish councillors and lay members and we will seek to advise the parish council on an additional lay member.

The planned maintenance of the common is largely on schedule. Working parties were able to meet on 5 Saturday mornings and more details of the work done follow later in this report. Covid-19 restrictions and a reorganisation of the community payback structure meant that the Community Payback teams were not available this year. So, although the work is reasonably well up-to-date, we are concerned that there will be difficulties in keeping to schedule next year. We will have to make more use of contractors than has been the case in the past. Fortunately, the DEFRA grant should cover these costs, but more voluntary help from the community would be welcome.

Only two of the planned nature walks were possible this year. The other walks had to be cancelled because of the Covid-19 restrictions.

Roy Jones and John Bebbington were concerned about possible lack of interest in the common among some members of the local community. To try and raise local interest they arranged a photographic display of images in the foyer of Westleton Village Hall. This will form a background to events in the foyer.



Photograph by Annie Groves



Photograph by Annie Groves

The images in this display can be changed occasionally. The display will remain in place at the discretion of the hall manager, who will interchange it with other uses of that wall-space. Roy and John also assembled a video display of images of the common; this can run as a continuous loop on the TV in the foyer as a background to activities.

Annie Groves, the Village Hall Manager, used these two images to publicise the display on the hall's Facebook page;



Photograph by Annie Groves



Photograph by Annie Groves

We hope that these displays help raise awareness and interest in the common and encourage more people to get involved in its management.

Annie reported that the feedback from hall visitors from near and far, has been very positive and that the display has helped raise awareness of the diversity on and location of the common.

Towards the end of the year some members of Westleton PC raised the issue of emergency access to the common. There are concerns that, in the event of fire or other emergency, access for emergency vehicles is inadequate. The suggestion is to widen and upgrade the path leading from the Bakers Lane car park onto the common. Nick Shearme and John Bebbington met with representatives of Suffolk Fire and Rescue from the Leiston Fire Station. It is clear that they would find additional access from the Bakers Lane car-park helpful and desirable. However, if that is not practical, or not acceptable, then the access route via the track leading up from Reckford Road near the lay-by will be adequate provided it is maintained. So, whilst providing emergency access from the Bakers Lane car park could be well worthwhile, it would not be essential.

This issue has been raised in the past and has caused considerable local concern. The Common Advisory Group believes that it is important to involve the local community and take full account of any concerns raised. In our view no decisions should be made, and no action should be taken, until full public consultation has been held. We feel that all people must be able to take part in the consultation so they can hear the arguments for and against the suggestion and contribute to the

debate. So, it is difficult to see how this can take place until the Covid-19 restrictions are eased and everyone, including those considered vulnerable, can take part.

Various surveys of the common were conducted during the year. Inevitably the Covid-19 restrictions meant that much of this activity was curtailed. We are very grateful to the people who did this work, in spite of the considerable difficulties, and their reports are included in this annual report. So, thank you David Rous, Neil Mahler, Clive Ireland and his colleagues in the Westleton Moth Group and Richard Drew.

We are very grateful to everyone who helped with the management of the Common during the year.

We thank all the people who helped with the working parties and are grateful to Pam and Alan Hargreaves for providing the much-needed refreshments.

We are grateful to the people who took the photographs that enliven this report and their permission to use them; David Rous, Neil Mahler, Clive Ireland, Juliet Bullimore Annie Groves, Barry Osborn, Jane Farrell (fireworks) and John Bebbington (working parties).

Juliet Bullimore helped with much of the organisation and publicity and made some valuable contributions to this report.

Sheila Francis helped with the identification of many of the fungi in the photographs (those not taken by Neil Mahler).

Annie Groves was very supportive and helpful in setting up and publicizing the photographic exhibition and video presentation in the village hall.

Our thanks to them all.

Westleton Common Advisory Group
January 2021

Westleton Common Advisory Group 2020

(up to July 2020)

Roy Jones Chairman Westleton Parish Council

email: rjones@kennet105.plus.com

John Bebbington Secretary

email: johnannbebbington@outlook.com

Arlette Smith

Roy Swindell

David Rous Work Party Leader

mail: David126754@outlook.com

Julian Alexander

Westleton Parish Council

Nick Shearme Bonfire Group Chair

Westleton Parish Council

Westleton Common Advisory Group 2020

(from July 2020)

Nick Shearme Chairman and Bonfire Group Chair Westleton Parish Council

email: nick@gardenend.co.uk

John Bebbington Secretary

email: johnannbebbington@outlook.com

David Rous Work Party Leader

email: David126754@outlook.com

Julian Alexander

Westleton Parish Council

Roy Jones

Arlette Smith

Amanda Freeman

Westleton Parish Council

Chris Freeman

Westleton Parish Council

Andrew Turner

Westleton Parish Council

WESTLETON COMMON PROGRAMME 2020

(As published in November 2019. Several events were cancelled because of Covid-19 restrictions)

WORKING PARTIES

10am - 12.30pm

Meet at the Container opposite the Common Noticeboard
on the right at the top of Mill St

Saturday January 18th

Saturday February 15th

Saturday March 21st

Summer bracken cutting - dates tba

(cancelled because of Covid-19 restrictions)

Saturday September 19th

Saturday October 17th

Saturday November 21st

(cancelled because of Covid-19 restrictions)

Refreshments provided, bring your own gloves.

—

NATURE WALKS

We are again having a series of informal walks/strolls covering each season
on the Common. We hope to have expert naturalists accompanying us on each occasion.

10.30am to 12 noon (approx)

Starting at the Container opposite the Common Noticeboard
on the right at the top of Mill St

Saturday February 22nd

Saturday April 4th

(cancelled because of Covid-19 restrictions)

Saturday May 16th

(cancelled because of Covid-19 restrictions)

Saturday June 27th

(cancelled because of Covid-19 restrictions)

Saturday September 5th

Saturday November 7th

(cancelled because of Covid-19 restrictions)

—

New Year's Day Bonfire and Fireworks

(Extracted from Minutes of WPC meeting on 27 Jan 2020)

Minute 20/16 Bonfire & Fireworks - 1st January 2020

The event had once again proved extremely successful and congratulations were recorded to Cllr Shearme and supporting team involved in the organisation.

Income received via donations, raffle draw etc. were broken down on a sheet circulated with the papers for the meeting.

(see below)

There was expenditure covering initial outlay for the purchase of provisions [sale of food/drinks] which totalled £124.47 as recorded in minute 20/7 above. *(see below)*

Appreciation was also recorded to the White Horse Inn for effectively stepping in and providing an alternative venue/meeting point with the Village Hall being out of commission.

Extracted from Westleton Parish Council Income and Expenditure Summary Sheets Financial year April 2019 to March 2020

Income;

Bonfire takings – cash	£1192.69
Bonfire donations – cash	£10.00
Bonfire donations – cheque	£20.00
Total income	£1222.69

Payments;

Dynamic Fireworks	£1162.67
J French	£24.00
Westleton Village Stores	£100.47
Total payments	£1287.14



Photographs by Jane Farrell

Working Parties

David Rous led all the working parties.

Working Party Saturday 18/01/2020

Area worked – sector 15 below Ralph’s Mill.

Work done - cleared birch and gorse.

Number of workers - 9 including David Rous, team leader.

Pam and Alan Hargreaves provided refreshments.



Before



Before



Before



“Tea” Break



After



After



After



After



After

Working Party Saturday 15/02/2020

There was a danger that this working party would have to be cancelled because of Storm Dennis. Fortunately, Dennis was delayed and didn’t get here till later in the afternoon. So, quite a lot was achieved.

Area worked – sector 8 adjacent to old football pitch to right of main path.

Work done - clear gorse and birch. Gorse cut to leave short stumps.

Number of workers = 8 including David Rous, team leader.

Pam and Alan Hargreaves provided refreshments.



Before



Before



Before



Before



After



After



After



After

Working Party Saturday 21/03/2020

Area Worked – Paths and Reckford Road layby.

Work Done – litter collected, path edges cleared where overgrown.

Number of workers = 9 including David Rous, team leader.

No refreshments available.

Only about 1 hour's work done.



Getting ready



Off to work



Making a start

Working Party Saturday 19/09/2020

Area worked – Sector 14 to left of track (heading south)

Work done – clearing gorse and birch.

Number of workers 8 including David Rous team leader. Contact details of team members were noted in case there was a need to “track and trace”.

This was the first working party since the start of the restrictions due to the Covid-19 pandemic.

Because of the need to maintain social distancing there was no half-time refreshment break.

Nick Shearme (chairman) and Julian Alexander (member) from the Westleton Common Advisory group toured the Common with David Rous to identify and prioritize work that needed to be done.

No work has been done of the Common since January 2020 because of the Covid-19 restrictions and it was necessary to review the work programme.



Before



Before



Before



Good Progress



Cut material



Cut material



After



After



After

Working Party Saturday 17/10/2020

Area worked – Sector 14 to right of track (heading south)

Work done – clearing gorse, birch etc.

Number of workers 12 including David Rous team leader. Contact details of team members were noted in case there was a need to “track and trace”.

Because of the need to maintain social distancing there was no Half-time refreshment break.



Before



Before



Before



Near the end



Near the end



After



After



After



After



Cut material



Cut material



Cut material

Because of Covid-19 restrictions the Community Pay-Back teams were unable to help with the management programme this year. However, thanks to the volunteers we have been able to keep reasonably up to date with the management plan.

Nature Walks and Other Observations

Nature walks, led by David Rous.

Only 2 of the planned walks were possible this year, those planned for Saturday February 22nd and Saturday September 5th. The other walks had to be cancelled because of the Covid-19 restrictions.

Nature Walk Saturday February 22nd



Polytrichum moss flowering in February - photo from Feb 22nd Nature Walk by Juliet Bullimore

Nature Walk Saturday September 5th



Massive Weld plant (Reseda luteola) in the foreground. Photo by Juliet Bullimore



Sloe Shield bugs (Dolycoris baccarat) on Common Mullein (Verbascum), Juliet Bullimore



Wasp spider (Argiope bruennichi) 5 September 2020, Juliet Bullimore

Other observations



Gorse on the Common April 1st, Juliet Bullimore



Foxgloves on May 29th, Juliet Bullimore



Holly Berries, Juliet Bullimore

Fungi.

Report by Neil Mahler.

Suffolk County Recorder for Fungi

Suffolk Biodiversity Information Service

See appendix for detailed lists of fungi seen.

The following photographs were taken by Neil Mahler.



Coltricia perennis - growing on bank near compartment 7. It was a very old specimen so I have used this photo of the same species found not too far away at Mumberry Hills



Hapalopilus nidulans growing behind the houses of Mill Street (compartment 5) South Common



Velvet Shank on Gorse with a single *Mycena galopus* (milking bonnet) below it.

And these were taken by Juliet Bullimore



Fly Agaric (*Amanita muscaria*)



Oyster mushroom (*Pleurotus ostreatus*)

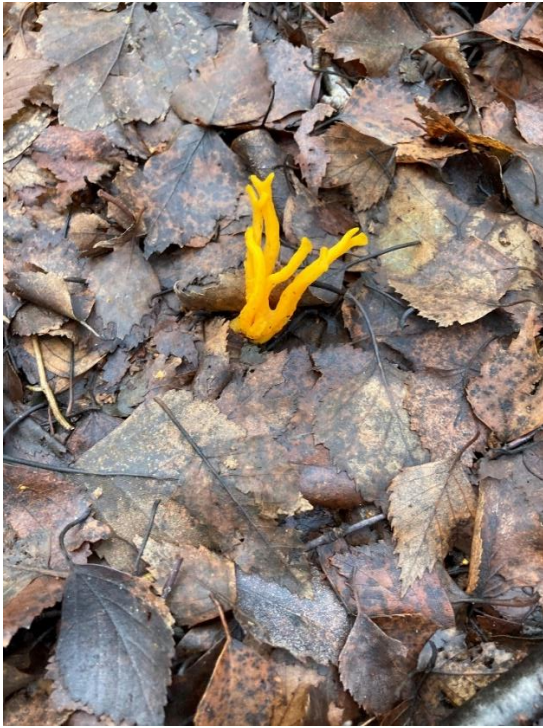


Ear Fungus (*Auricularia auricula-judae*) on Elder



Gorse branch with both the pale pink Tripe fungus (*Auricularia mesenterica*) and the darker coloured jelly fungus, a species of *Exidia*

And these by Barry Osborn



Yellow Stagshorn or *Calocera viscosa*



Ear Fungus (*Auricularia auricula-judae*)



Yellow Brain
or *Tremella mesenterica*



Birch Polypore
or *Piptoporus betulinus*
(Razor strop fungus)

Insects



Garden Tiger moth caterpillar (very shy and curled up!), Juliet Bullimore



Silver Studded Blue butterflies 26 June 2020, Juliet Bullimore



Small Copper butterfly June 27 2020, Juliet Bullimore

Moths

(Reported by Clive Ireland)

WESTLETON COMMON MOTH GROUP

Annual report 2020

It's doubtful if anyone of us will ever forget the year 2020. Obviously, the restrictions placed upon us due to the Covid19 epidemic had major implications for our ability to conduct a full season of moth trapping events on Westleton Common. Having said that it did prove possible to set traps on a more or less a monthly basis from April through to October. Understandably the number of people attending was well reduced on previous years and this was a pity as it proved to be a good year overall albeit rather uneven. There was some good mothing in the spring but the very dry almost drought-like spring then took its toll on reducing the number of moths in mid-summer presumably due to the failure of the larvae to successfully feed (anyone strolling over the heath in the spring could not have failed to notice the lack of green vegetation.) However, moth numbers picked up later on and August and September produced some outstanding mothing.

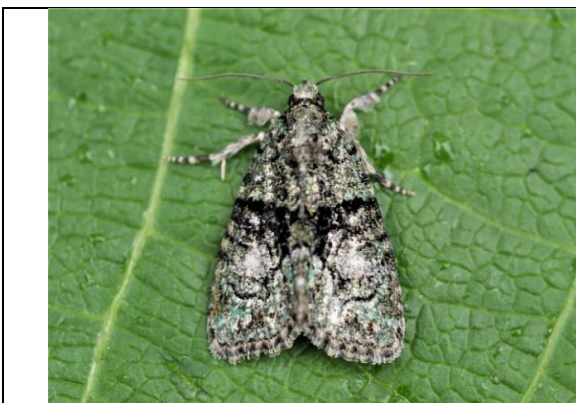
Overall, 270 species were recorded in 7 trapping sessions and included thirty species previously unrecorded on the Common. Chief amongst these was the superb Clifden Nopareil trapped in the last session of the year on 11 October. This handsome species is Britain's largest moth and until just a few years back was considered a true rarity. In the last couple of years, however, it has moved into SE Britain from the continent - no doubt in response to a warming climate - and is now breeding in our area. Consequently, although this was the first record on the Common, it is most unlikely to be the last. Another new species worth mentioning, though decidedly less welcome, was the Oak Processionary recorded on 30 June. This species, again abetted by climate change, has been spreading through southern Britain and reached East Suffolk this year in significant numbers. Though rather handsome it is a major potential pest, the larvae being quite capable of completely defoliating an oak tree in rapid time. Some London park authorities have actually started to try to control it through chemical means. A nice moth to see but hopefully we won't see it too often.



Clifden Nopareil (Blue Underwing)



Oak Processionary



Tree-lichen Beauty



Evergestis limbata

Our plans for 2021 are presently in abeyance and will depend on the course that the Covid19 epidemic takes. We hope of course to run a full programme of events starting as soon as the weather becomes suitable in Spring but we will just

have to wait and see. In the meantime, our records continue to constitute an important indication of the environmental welfare of the Common and all records have been submitted to the Suffolk moth recorder. Our thanks as always go to Tony Ingram for facilitating the electrical power to our traps.

Safety Audit

Westleton Common Advisory Group Safety Audit Report

Date of Audit – Tuesday 19th May 2020

Auditors – Nick Shearme and John Bebbington

Scope of Audit;

All main paths on both sides of Baker's Lane and Mill Street/Mill Road were walked including Black Slough and the footpath leading from the North Common past Nash Barn and King's Farm as far as the cultivated fields.

The area leading to and surrounding the pond on the North Common and the track leading to Reckford Road and the Reckford Road layby were examined.

All seats, handrails and steps were checked.

Findings;

The whole Common was very dry due to the lack of recent significant rainfall. We feel that there is a potential fire risk and we recommend that the fire warning signs are put in place.

On the Reckford Road layby by the central litter bin we found a 25-litre drum containing fluid. The drum is marked "flammable". NS telephoned Ian Haines, Clerk to Westleton Parish Council and asked him if he could arrange for it to be removed. This is in hand.

The beehives near the pond are active. We feel that there is adequate warning about the presence of these hives on the notice board at the entrance to this part of the Common and that to put additional warning signs near the hives would be unwise as it would attract unwelcome interest and probably be counter-productive. The hives are well hidden by the overgrowth of birch and there may be a case for clearing the birch, so the hives are more visible. This should be discussed.

All seats, handrails and steps are sound.
No other problems were found.

Recommendation;

Put fire risk warning signs in place.

Ensure drum of flammable liquid is removed from Reckford Road layby.

Consider clearing overgrown birch obscuring beehives.

*Nick Shearme and John Bebbington
19/05/2020*

Action taken

Fire risk warning notices put in place.

Westleton Parish Council arranged for the removal of the flammable liquid drum by East Suffolk Council.

Clearing birch to be delayed until maintenance programme can be restarted when Covid-19 restrictions allow.

After the audit a visitor reported a problem with the bee hives and two signs (below) were installed on the access paths.

Westleton Common

Warning Notice

There are several beehives on the Common near this path. Visitors, especially those who may be allergic to bee stings, are advised not to leave the path and not to approach the hives.

Thank you.

Westleton Common Advisory Group

APPENDIX: 2020 Records

Sliver Studded Blue Butterfly counts 2020

(Reported by David Rous)

17/06/2020

Males 79 females 17

24/06/2020

Males 89 females 20

Fungi

(Reported by Neil Mahler, Suffolk County Recorder for Fungi, Suffolk Biodiversity Information Service)

North Common (1 & 2) Aug 26 2020

Schizopora paradoxa - on oak

Trametes versicolor - on gorse

Vuilleminia comedans - on dead Oak branch

Peniophora quercina - dead oak branch

Diatrypella quercina - dead oak branch

Cerioporus squamosus (new name for Dryad's Saddle) - on gorse

Ganoderma australe - oak stump

Radulomyces molare - dead oak branch

Exidia glandulosa - dead oak branch

North Common Oct 6th 2020

Polyporus tuberosa - on gorse

Gymnopilus dryophyllus - soil.

Marasmius oreades (Fairy Ring mushroom was spotted on the small middle common) Oct 6th.

South Common Oct 6th 2020

Lycoperdon pratense - soil

Gymnopilus dryophyllus - soil

Xylaria hypoxylon - dead root

Crepidotus cesatii - dead wood

Rhopoglyphus filicinus - dead bracken stem

Radulomyces molare - dead oak branch

Schizopora paradoxa - dead oak branch

Vuilleminia comedans - dead oak branch

Peniophora quercina - dead oak branch

Exidia nucleata - dead wood

Hapalopilus nidulans - on dead Rowanberry/Mountain Ash - new ?

Scleroderma citrinum - soil

Tremella mesenterica - gorse

Stereum hirsutum - dead wood

Lachnum virgineum - on dead leaf

South Common November 19th 2020

Flammulina velutipes - gorse

Mycena galopus - soil/gorse

Peniophora incarnata - gorse

Stereum hirsutum - gorse

Dacrymyces stillatus - gorse
Bjerkandera fumosa - gorse
Bjerkandera adusta - gorse
Tremella mesenterica - gorse
Trametes versicolor - gorse
Mycena galericulata - gorse
Rickenella fibula - moss
Rickenella swartzii - moss
Clavaria argillacea - heather
Coltricia perennis - moss covered bank with Betula - new ?

South Common December 4th 2020

Pleurotus ostreatus - gorse
Amanita muscaria - remains of !
Tremella mesenterica - gorse
Crepidotus cesatii - gorse
Flammulina velutipes - gorse
Rhodocollybia butyracea - soil
Chondrostereum purpureum - gorse
Laccaria laccata - soil.
Cortinarius hemitrichus - Birch
Xylaria hypoxylon - dead wood
Coprinellus micaceus
Large clump of fungi on Salix - very rotten but suspect they could have been Pholiota squarrosa
Large Hebeloma on soil below Salix - past its best, but large size suggests Hebeloma sinapizans (if the soil was calcareous in this spot)

I will have to check the willows earlier next year to see if I can find the last 2 species in better condition before they go rotten. It's a case of being in the right place at the right time.

Moths 2020

(Report by Clive Ireland – Westleton Moth Group)

WESTLETON COMMON - MOTH RECORDS 2020										
Check-list No.	Scientific name	English name	2020	05-Apr	03-May	26-May	30-Jun	01-Aug	11-Sep	11-Oct
		Traps		1 MV Robinson 1 Actinic Skinner	1 MV Robinson 1 Actinic Skinner	2 MV Robinson 1 Actinic (Skinner)	2 MV Robinson 1 LED	2 MV Robinson	2 MV Robinson	2 MV Robinson 1 Actinic Skinner
				Clear, 2-3 S 5C	Cloudy 3-4 NW 5C	Clear bright, 2-3 NE min 10C	Cloudy dry, 1-2 SW, min 14C	overcast dry, calm, min 19C	Cloudy but clearing, dry, 2-3 SW, 11C	Cloudy but clearing to 10%, dry, calm, 7C
	MACRO MOTHS									
	Hepialidae (Swift moths)									
17	<i>Hepialus lupulinus</i>	COMMON SWIFT	P			1				
1634	<i>Malacosoma neutria</i>	LACKEY	P				13			
1637	<i>Lasiocampa quercus</i>	OAK EGGAR	P					1		
1638	<i>Macrothylacia rubi</i>	FOX MOTH	P			2				
1640	<i>Euthrix potatoria</i>	DRINKER	P					2		
	Drepanidae (Hook-tips)									
1645	<i>Falcaria lacertinaria</i>	SCALLOPED HOOK-TIP	P					5		
1646	<i>Watsonalla binaria</i>	OAK HOOK-TIP	P					6		
1648	<i>Drepana falcataria</i>	PEBBLE HOOK-TIP	P					2		
1651	<i>Cillix glaucata</i>	CHINESE CHARACTER	P		1			8		
	Thyatiridae									
1653	<i>Habrosyne pyritoides</i>	BUFF ARCHES	P				1			
1660	<i>Polyphoca ridens</i>	FROSTED GREEN	P	3	1					
	Geometridae - Geometrinae (Emeralds)									
1663	<i>Alsophila aescularia</i>	MARCH MOTH	P	1						
1665	<i>Pseudoterpna pruinata</i>	GRASS EMERALD	P				3			
1667	<i>Comibaena bajularia</i>	BLOTCHED EMERALD	P				1			
1669	<i>Hemithea aestivaria</i>	COMMON EMERALD	P				1			
1673	<i>Hemithea chrysoprasaria</i>	SMALL EMERALD	P					1*		
	Geometridae - Sterrhinae (Mochas & Waves)									
1677	<i>Cyclophora albipunctata</i>	BIRCH MOCHA	P			1		1		
1680	<i>Cyclophora punctaria</i>	MAIDEN'S BLUSH	P		7	1		2		
1682	<i>Timandra comae</i>	BLOOD-VEIN	P					1		
1690	<i>Scopula imitaria</i>	SMALL BLOOD-VEIN	P				2			
1699	<i>Idaea rusticata</i>	LEAST CARPET	P				1	7		

WESTLETON COMMON - MOTH RECORDS 2020										
Check-list No.	Scientific name	English name	2020	05-Apr	03-May	26-May	30-Jun	01-Aug	11-Sep	11-Oct
1705	<i>Idaea fuscovenosa</i>	DWARF CREAM WAVE	P				5			
1707	<i>Idaea seriata</i>	SMALL DUSTY WAVE	P				1	1		
1708	<i>Idaea dimidiata</i>	SINGLE-DOTTED WAVE	P				1			
1711	<i>Idaea trigeminata</i>	TREBLE BROWN SPOT	P				1			
1713	<i>Idaea aversata</i>	RIBAND WAVE	P				8	14		
	Geometridae - Larentinae (Carpets, pugs & allies)									
1747	<i>Anticlea derivata</i>	STREAMER	P	1*						
1752	<i>Cosmorhoe ocellata</i>	PURPLE BAR	P				1			
1764	<i>Chloroclysta truncata</i>	COMMON MARBLED CARPET	P			1				
1767	<i>Thera firmata</i>	PINE CARPET	P							2
1768	<i>Thera obeliscata</i>	GREY PINE CARPET	P			1				
1776	<i>Colostygia pectinataria</i>	GREEN CARPET	P			1				
1777	<i>Hydriomena furvata</i>	JULY HIGHFLYER	P					1*		
1808	<i>Perizoma flavofasciata</i>	SANDY CARPET	P					1		
1817	<i>Eupithecia pulchellata</i>	FOXGLOVE PUG	P			2				
1825	<i>Eupithecia centaureata</i>	LIME-SPECK PUG	P			1		3		
1846	<i>Eupithecia nanata</i>	NARROW-WINGED PUG	P					1		
1852	<i>Eupithecia abbreviata</i>	BRINDLED PUG	P	3	1					
1853	<i>Eupithecia dodoneata</i>	OAK-TREE PUG	P			1				
1860	<i>Pasiphila rectangulata</i>	GREEN PUG	P				1			
1862	<i>Gymnoscelis rufifasciata</i>	DOUBLE-STRIPED PUG	P	2			1	1		
1883	<i>Acasis viretata</i>	YELLOW-BARRED BRINDLE	P		1					
	Geometridae - Ennominae (Thorns, beauties, umbers & allies)									
1887	<i>Lomaspilis marginata</i>	CLOUDED BORDER	P			1				
1888	<i>Ligdia adusta</i>	SCORCHED CARPET	P					1		
1889	<i>Macaria notata</i>	PEACOCK MOTH	P					1		
1890	<i>Macaria alternata</i>	SHARP-ANGLED PEACOCK	P					1		
1893	<i>Macaria liturata</i>	TAWNY-BARRED ANGLE	P		1					
1894	<i>Chiasmia clathrata</i>	LATTICED HEATH	P						1	
1902	<i>Petrophera chlorosata</i>	BROWN SILVER-LINE	P		3	16	7			
1906	<i>Opisthograptis luteolata</i>	BRIMSTONE MOTH	P					3	1	
1914	<i>Ennomos fuscantaria</i>	DUSKY THORN	P						2	
1917	<i>Selenia dentaria</i>	EARLY THORN	P	1						
1919	<i>Selenia tetralunaria</i>	PURPLE THORN	P		1					
1921	<i>Crocallis elinguaris</i>	SCALLOPED OAK	P				2	1		
1922	<i>Ourapteryx samucaria</i>	SWALLOW-TAILED MOTH	P				3			

WESTLETON COMMON - MOTH RECORDS 2020										
Check-list No.	Scientific name	English name	2020	05-Apr	03-May	26-May	30-Jun	01-Aug	11-Sep	11-Oct
2005	<i>Peridea anceps</i>	GREAT PROMINENT	P		7	2				
	Thaumetopoeidae - Processionary moths									
2022	<i>Thaumetopoea processionea</i>	OAK PROCESSIONARY	P				1*			
	Lymantriidae (Tussock moths)									
2028	<i>Calliteara pudibunda</i>	PALE TUSOCK	P			6				
2029	<i>Euproctis chrysorrhoea</i>	BROWN-TAIL	P				2			
2030	<i>Euproctis similis</i>	YELLOW-TAIL	P					7		
2033	<i>Lymantria monacha</i>	BLACK ARCHES	P					9		
	Arctidae - Arctinae (Tiger moths, ermines, footman moths & allies)									
2037	<i>Miltochrista miniata</i>	ROSY FOOTMAN	P				2	15		
2043	<i>Eilema sororcula</i>	ORANGE FOOTMAN	P			5				
2044	<i>Eilema griseola</i>	DINGY FOOTMAN	P					11		
2047	<i>Eilema complana</i>	SCARCE FOOTMAN	P				6	83		
2049		BUFF FOOTMAN	P					7		
2050	<i>Eilema lurideola</i>	COMMON FOOTMAN	P				5	5		
2051	<i>Lithosia quadra</i>	FOUR-SPOTTED FOOTMAN	P					2		
2058	<i>Arctia villica</i>	CREAM-SPOT TIGER	P			5				
2061	<i>Spilosoma luteum</i>	BUFF ERMINE	P			1	1	1		
2062	<i>Spilosoma urticae</i>	WHITE ERMINE	P			4				
2063	<i>Diaphora mendica</i>	MUSLIN MOTH	P		8	1				
2064	<i>Phragmatobia fuliginosa</i>	RUBY TIGER	P					6		
2069	<i>Tyria jacobaeae</i>	CINNABAR	P		2	23	5			
	Nolidae									
2076	<i>Meganola albula</i>	KENT BLACK ARCHES	P				1			
	Noctuidae - Noctuinae (Darts, yellow underwings & clays)									
2081	<i>Euxoa obelisca</i>	WHITE-LINE DART	P					4		
2085	<i>Agrotis vestigalis</i>	ARCHER'S DART	P				1			
2087	<i>Agrotis segetum</i>	TURNIP MOTH	P					5	1	1
2088	<i>Agrotis clavis</i>	HEART AND CLUB	P				4			
2089	<i>Agrotis exclamatoris</i>	HEART AND DART	P			18	1			
2092	<i>Agrotis puta</i>	SHUTTLE-SHAPED DART	P		8	4		15		
2102	<i>Ochropleura plecta</i>	FLAME SHOULDER	P						1	
2107	<i>Noctua pronuba</i>	LARGE YELLOW UNDERWING	P				3	4	29	3
2108	<i>Noctua orbona</i>	LUNAR YELLOW UNDERWING	P						1	
2109	<i>Noctua comes</i>	LESSER YELLOW UNDERWING	P						4	3

WESTLETON COMMON - MOTH RECORDS 2020										
Check-list No.	Scientific name	English name	2020	05-Apr	03-May	26-May	30-Jun	01-Aug	11-Sep	11-Oct
2258	<i>Conistra vaccinii</i>	CHESTNUT	P	4						15
2260	<i>Conistra rubiginosa</i>	DOTTED CHESTNUT	P		1*					
2264	<i>Agrochola macilenta</i>	YELLOW-LINE QUAKER	P							3
2265	<i>Agrochola helvola</i>	FLOUNGED CHESTNUT	P							2
2266	<i>Agrochola litura</i>	BROWN-SPOT PINION	P							1
2267	<i>Agrochola lychnidis</i>	BEADED CHESTNUT	P							9
2269	<i>Atethmia centrigo</i>	CENTRE-BARRED SALLOW	P						2	
2270	<i>Omphaloscelis lumosa</i>	LUNAR UNDERWING	P						1	14
2273	<i>Xanthia togata</i>	PINK-BARRED SALLOW	P							1
2274	<i>Xanthia icteritia</i>	SALLOW	P							2
2278	<i>Acronicta megacephala</i>	POPLAR GREY	P			1	2			
2283	<i>Acronicta Sp.</i>	GREY/DARK GREY DAGGER	P				1	5		
2292	<i>Cryphia algae</i>	TREE-LICHEN BEAUTY	P					5*		
	Noctuidae - Amphipyridae (Arches, brindles, minors, rustics and allies)									
	<i>Amphipyra sp.</i>	SVENSSON'S COPPER / COPPER UNDERWING	P					1		
2297	<i>Amphipyra pyramidea</i>	COPPER UNDERWING	P						1	
2299	<i>Amphipyra tragopoginis</i>	MOUSE MOTH	P					1		
2301	<i>Dypterygia scabriuscula</i>	BIRD'S WING	P				2			
2302	<i>Rusina ferruginea</i>	BROWN RUSTIC	P			3	8			
2303	<i>Thalpophila matura</i>	STRAW UNDERWING	P					2		
2305	<i>Euplexia lucipara</i>	SMALL ANGLE SHADES	P					1		
2306	<i>Phlogophora meticulosa</i>	ANGLE SHADES	P							1
2318	<i>Cosmia trapezina</i>	DUN-BAR	P					4		
2321	<i>Apamea monoglypha</i>	DARK ARCHES	P				2	10		
2322	<i>Apamea lithoxylaea</i>	LIGHT ARCHES	P				1			
2326	<i>Apamea epomidion</i>	CLOUDED-BORDERED BRINDLE	P				1			
	<i>Oligia sp.</i>	MARbled MINOR aggregate	P			3	1			
2341	<i>Mesoligia furuncula</i>	CLOAKED MINOR	P					2		
2342	<i>Mesoligia literosa</i>	ROSY MINOR	P					1		
2343 / 44	<i>Mesapamea sp.</i>	COMMON / LESSER RUSTIC agg.	P					3		
2353	<i>Luperina testacea</i>	FLOUNGED RUSTIC	P						6	2
2360	<i>Amphipoea oculea</i>	EAR MOTH	P					3		
2370	<i>Archanara geminipuncta</i>	TWIN-SPOTTED WAINSCOT	P					1*		
2375	<i>Rhizedra lutosa</i>	LARGE WAINSCOT	P							1
2380	<i>Charanyca trigammica</i>	TREBLE LINES	P		9	47				
2381	<i>Hoplodrina alsines</i>	UNCERTAIN	P				17	13		

WESTLETON COMMON - MOTH RECORDS 2020										
Check-list No.	Scientific name	English name	2020	05-Apr	03-May	26-May	30-Jun	01-Aug	11-Sep	11-Oct
2382	<i>Hoplodrina blanda</i>	RUSTIC	P				3	8		
	<i>Hoplodrina</i> Sp.	UNCERTAIN / RUSTIC agg.	P					1		
2384	<i>Hoplodrina ambigua</i>	VINE'S RUSTIC	P			3			1	
2387	<i>Caradrina morpheus</i>	MOTTLED RUSTIC	P			1	1			
2389	<i>Paradrina clavipalpis</i>	PALE MOTTLED WILLOW	P			2*				
	Noctuidae - Heliothinae									
2410	<i>Protodeltote pygarga</i>	MARBLED WHITE SPOT	P				1			
	Noctuidae - Eariadinae									
2418	<i>Earias clorana</i>	CREAM-BORDERED GREEN PEA	P				1			
	Noctuidae - Chloephorinae									
2422	<i>Pseudops prasinana</i>	GREEN SILVER-LINES	P			1	2			
	Noctuidae - Plusiinae (Silver and Gold Ys and brasses)									
2434	<i>Diachrysia chrysitis</i>	BURNISHED BRASS	P				1			
	Noctuidae - Catocalinae (Red Underwing etc)									
2451	<i>Catocala fraxini</i>	CLIFDEN NONPAREIL	P							1*
	Noctuidae - Rivulinae									
2473	<i>Laspeyria flexula</i>	BEAUTIFUL HOOK-TIP	P				7	2		
2474	<i>Rivula sericealis</i>	STRAW DOT	P				1	2		
	Noctuidae - Hypeninae (Snouts)									
2477	<i>Hypena proboscidalis</i>	SNOUT	P				1		2	
	Noctuidae - Herminiinae (Fan-foots)									
2489	<i>Zanclognatha tarsipennalis</i>	FAN-FOOT	P				2			
	MICRO MOTHS									
48	<i>Dyseriocrania subpurpurella</i>		P	2						
119	<i>Opostega salaciella</i>		P					1*		
232	<i>Monopis monachella</i>		P				1*			
246	<i>Tinea semifulvella</i>		P				1*			
246	<i>Tinea trinotella</i>		P					1		
286	<i>Caloptilia alchimiella</i>		P					2		
303	<i>Parornix angicella</i>		P			1*				

WESTLETON COMMON - MOTH RECORDS 2020										
Check-list No.	Scientific name	English name	2020	05-Apr	03-May	26-May	30-Jun	01-Aug	11-Sep	11-Oct
315	<i>Phyllonorycter harrisella</i>		P		1*					
337	<i>Phyllonorycter hilarella</i>		P				1*			
411	<i>Argyresthia goedartella</i>		P					1		
	<i>Yponomeuta malinellus / padella</i>	APPLE / ORCHARD ERMINE	P					1		
427	<i>Yponomeuta cagnagella</i>	SPINDLE ERMINE	P					1		
440	<i>Paraswammerdami a albicapitella</i>		P					1*		
464	<i>Plutella xylostella</i>	DIAMOND-BACK MOTH	P				1			
	<i>Coleophora sp.</i>		P			6		5		
	<i>Batia sp.</i>		P					1		
647	<i>Hofmannophila psuedospretella</i>	BROWN HOUSE MOTH	P				1			
658	<i>Carcina quercana</i>		P				1	4		
663	<i>Diurnea fagella</i>		P	1*						
776	<i>Teleiopsis diffinis</i>		P			10		3	1	
787	<i>Bryotropha terrella</i>		P					1		
796	<i>Aroga velocella</i>		P				3*			
861	<i>Helcystogramma rufescens</i>		P				2			
866	<i>Brachmia blandella</i>		P					1*		
873	<i>Blastobasis adustella</i>		P					3	3	
874	<i>Blastobasis lacticolella</i>		P				2			
965	<i>Cochylis hybridella</i>		P					1*		
966	<i>Cochylis atricapitana</i>		P		3	2	1			
970	<i>Pandemis cerasana</i>	BARRED FRUIT-TREE TORTRIX	P				4			
972	<i>Pandemis heparana</i>	DARK FRUIT-TREE TORTRIX	P					1		
980	<i>Archips xylosteana</i>	VARIEGATED GOLDEN TORTRIX	P				2	1		
998	<i>Epiphyas postvittana</i>	LIGHT-BROWN APPLE MOTH	P		1					
	<i>Cnephasia Sp.</i>		P					1		
1032	<i>Aleimma loeflingiana</i>		P				14			
1033	<i>Tortrix viridana</i>	GREEN OAK TORTRIX	P				4			
1036	<i>Acleris forsskaleana</i>		P					2		
1045	<i>Acleris notana</i>		P				1			
1061	<i>Acleris literana</i>		P	1*						
1063	<i>Celypha striana</i>		P				1*			
1083	<i>Hedya nubiferana</i>	MARbled ORCHARD TORTRIX	P				2			
1092	<i>Apotomis turbidana</i>		P				1	1		
1093	<i>Apotomis betuletana</i>		P				1	10		
1094	<i>Apotomis capreana</i>		P				1			
1113	<i>Eudemis profundana</i>		P				4	1		
1165	<i>Zeirphera isertana</i>		P				1			
1168	<i>Gypsonoma sociana</i>		P				1			
1174	<i>Notocelia cynosbatella</i>		P			1*				
1175	<i>Epiblema uddmanniana</i>	BRAMBLE SHOOT MOTH	P				4			

WESTLETON COMMON - MOTH RECORDS 2020										
Check-list No.	Scientific name	English name	2020	05-Apr	03-May	26-May	30-Jun	01-Aug	11-Sep	11-Oct
1201	<i>Ecosma cana</i>		P				1			
1205	<i>Spilonota ocellana</i>	BUD MOTH	P				1*			
1233	<i>Pammene aurita</i>		P					1		
1259	<i>Cydia fagiglandana</i>		P					1*		
1260	<i>Cydia splendana</i>		P					1		
1288	<i>Alucita hexadactyla</i>	MANY-PLUME MOTH	P	1	4		1	1		
1293	<i>Chrysoteuchia culmella</i>	GARDEN GRASS VENEER	P				11	10		
1294	<i>Crambus pascuella</i>		P				2			
1301	<i>Crambus lathoniellus</i>		P				2			
1302	<i>Crambus perlella</i>		P				1			
1309	<i>Agriphila geniculea</i>		P					2	1	
1313	<i>Catoptria pinella</i>		P				1	3		
1316	<i>Catoptria falsella</i>		P					3		
1326	<i>Platytes cerussella</i>		P				2			
1331	<i>Acentria ephemerella</i>	WATER VENEER	P					4		
1344	<i>Eudonia mercurella</i>		P					8		
1348	<i>Parapoynx stratiotata</i>	RINGED CHINA-MARK	P				1	1		
1356a	<i>Evergestis limbata</i>		P				1*			
1361	<i>Pyrausta aurata</i>		P					2*		
1376	<i>Eurrhpara hortulata</i>	SMALL MAGPIE	P				1			
1390	<i>Udea prunalis</i>		P					2		
1405	<i>Pleuoptya ruralis</i>	MOTHER OF PEARL	P				1	5		
1413	<i>Hypsopygia costalis</i>	GOLD TRIANGLE	P				1	2		
1414	<i>Synaphe punctalis</i>		P				6	6		
1417	<i>Pyralis farinalis</i>	MEAL MOTH	P				1*			
1424	<i>Endotricha flammealis</i>		P				2	5		
1428	<i>Aphomia sociella</i>	BEE MOTH	P				3			
1438	<i>Acrobasis suavella</i>		P					1*		
1442	<i>Pempelia palumbella</i>		P			2	4		1	
1443	<i>Pempelia genistella</i>		P				4	9		
1452	<i>Phycita roborella</i>		P				2*			
1481	<i>Homoeosoma sinuella</i>		P				1			
1483	<i>Phycitodes binaevella</i>		P				2			
1494	<i>Capperia britanniodactylus</i>	WOOD SAGE PLUME	P	1			1*			
1497	<i>Amblyptilia acanthhadactyla</i>	BEAUTIFUL PLUME	P	1*			2			
1524	<i>Emmelina monodactyla</i>	COMMON PLUME	P	1						
Total	265		271	22	24	54	115	117	27	24

* First record for Westleton Common

Reptiles 2020

(Reported by David Rous)

02/03/2020

1 adder football pitch west side

1 adder noddle slope

11/03/2020

3 male adders and 2 female adders

Insects 2020

(Reported by David Rous)

19/02/2020

white tailed bumblebee

honey bee

02/03/2020

bufftailed bumblebee

12/04/2020

Eristalis pertinax (hoverfly)

May 2020

Goodens nomad bee

mini mining bee

red damselfly

small copper butterfly

orange tip butterfly

peacock butterfly

Birds 2020

(Reported by Richard Drew)

Note from Richard Drew March 2020.

*Just in case you don't know there are a pair of **Dartford Warblers** on the old football pitch part of the common.*

As they are a schedule 1 breeding specie it is important that they are not disturbed.

I will keep an eye on them and let's hope they are successful.

Bird sighting reported by David Rous

11/03/2020

2 chiffchaffs

12/04/2020

3 nightingales

Westleton Common Advisory Group

January 2021